



بدوي لصناعة الروافع الهيدروليكية - بيكو  
Badawy Hydraulic Lifting Equipment - **BEECO**

بدوي للصناعات المعدنية - بيكو  
Badawy Metal Industries - **BEECO**

إيجيبت مودرن تكنولوجيا - بيكو  
ش.م.م  
Egypt Modern Technology - **BEECO**

**BADAWY GROUP BEECO** since 1953

COMPANY PROFILE



- **About us**

- The Badawy Group was founded by Mr. Ezzat Badawy in 1953. It started out as a small workshop in Cairo in the field of engineering and sheet metal works. By mid 80's, the business had grown and was moved to the industrial zone in 10th of Ramadan City by the first company of Badawy engineering industries. By the year 1990 the Badawy Hydraulic Lifting Equipment Company was established. Not very long afterwards, the Badawy Metal Forming Company was established in 2001.
- Badawy industry and trade group BEECO consists of the following entities:
  - Badawy Metal Industries
  - Badawy Hydraulic Lifting Equipment
  - Egypt Modern Technology
- **BEECO** is the trade name for Badawy Group. It is a leading provider for lifting equipment, aerial work platforms, warehouse handling & racking systems, supermarket shelves, gypsum board partitions, metal tiles, profiles and accessories for the suspended ceilings.
- **BEECO** provides as well sheet metal processing (slitting and cut to length) services. The collection of various CNC machines provides a wide range of metal forming & services.



## • VISION STATEMENT

**BEECO** was the first National Company to produce Egyptian hand pallets in 1988.

Therefore, our vision is to sustain the **BEECO** Market leadership, sharing our Clients the success and benefit of providing Quality Solutions & Outstanding Services.

**BEECO** is a leading Manufacturer and provider of Material Handling and Racking Solutions aiming at fulfilling the Market needs with Quality Products and distinguished services.

## • MISSION STATEMENT

**BEECO** is a producer of Material Handling equipment, Lockers, Warehouse/Racking Solutions and Suspended Ceilings Systems, Transformers Enclosures & Tanks to fulfill the needs of Factories, Warehouses, Hospitals, Hotels, Malls and all Industrial, Commercial and Services Enterprises.

**BEECO** strive to achieve its goals emphasizing on and thru the following pillars:

- Focusing on Market needs,
- Providing High Quality Products/Services,
- Satisfy our Customers,
- Increasing stakeholders Loyalty,
- Meeting Safety, Environment and Social Resp. &
- Ensuring Continuous Improvements.





## • Values

- Business is an effective asset to the society.
- **BEECO** considers playing a supportive role to promote good values to the society.
- **BEECO** adopts Health & Safety Programs.
- **BEECO** appreciates the role of engaging itself in a genuine CSR (Corporate social responsibility) program.
- **BEECO** seeks to build up a reputation as a responsible business towards the environment and its community.



## • Growth strategy

**BEECO** growth aims at offering one stop solutions shop (warehouse mgt systems) to fulfill the needs of the market.

In addition to its Standard Products, **BEECO** fulfills customers' special needs (bespoke solutions).

**BEECO** provides services in the area of sheet metal works and coil pressing, CNC machining, industrial services electrostatic painting and maintenance.





## • Services

The reputation of the Badawy Group has been growing over the years in providing services to other manufacturers. Manufacturing cooperating concept has been a corner stone in The Group production orientation; The Group has always considered its facilities a valuable tool to fulfill any manufacturing needs in the market. The advanced CNC and miscellaneous working technologies enable the group to provide top services in producing custom per order works by operating multiple specialized and fully equipped manufacturing divisions.

### • Handling Equipment Maintenance

**BEECO** also provides maintenance services for all products sold to its customers as well as necessary maintenance services to any material handling machines owned by the customer.

### • CNC Services

Accurate CNC Services is a full service CNC Fabrication Shop that specializes in cut jobs, fabrication, and/or assembly jobs of any nature. We serve several customers in many different industries

### • Sheet Cutting/Slitting

We provide machining, Sheet metal cutting, and slitting services for manufacturers and many businesses.





## •Quality policies

**BEECO** is a one stop station reputable for its quality and reliability.

The Group companies are certified with ISO & OHSAS certificates.

- ISO 9001/2008 ..... (Quality Management).

Our partners in Europe and U.S.A. supplies us with the best high quality components required for producing our wide range of products.





## OUR HYDRAULIC LIFTING EQUIPMENT



Hand Stackers



Electric Stackers



Hand Pallets



Hydraulic Dock Leveler



Personnel Lift



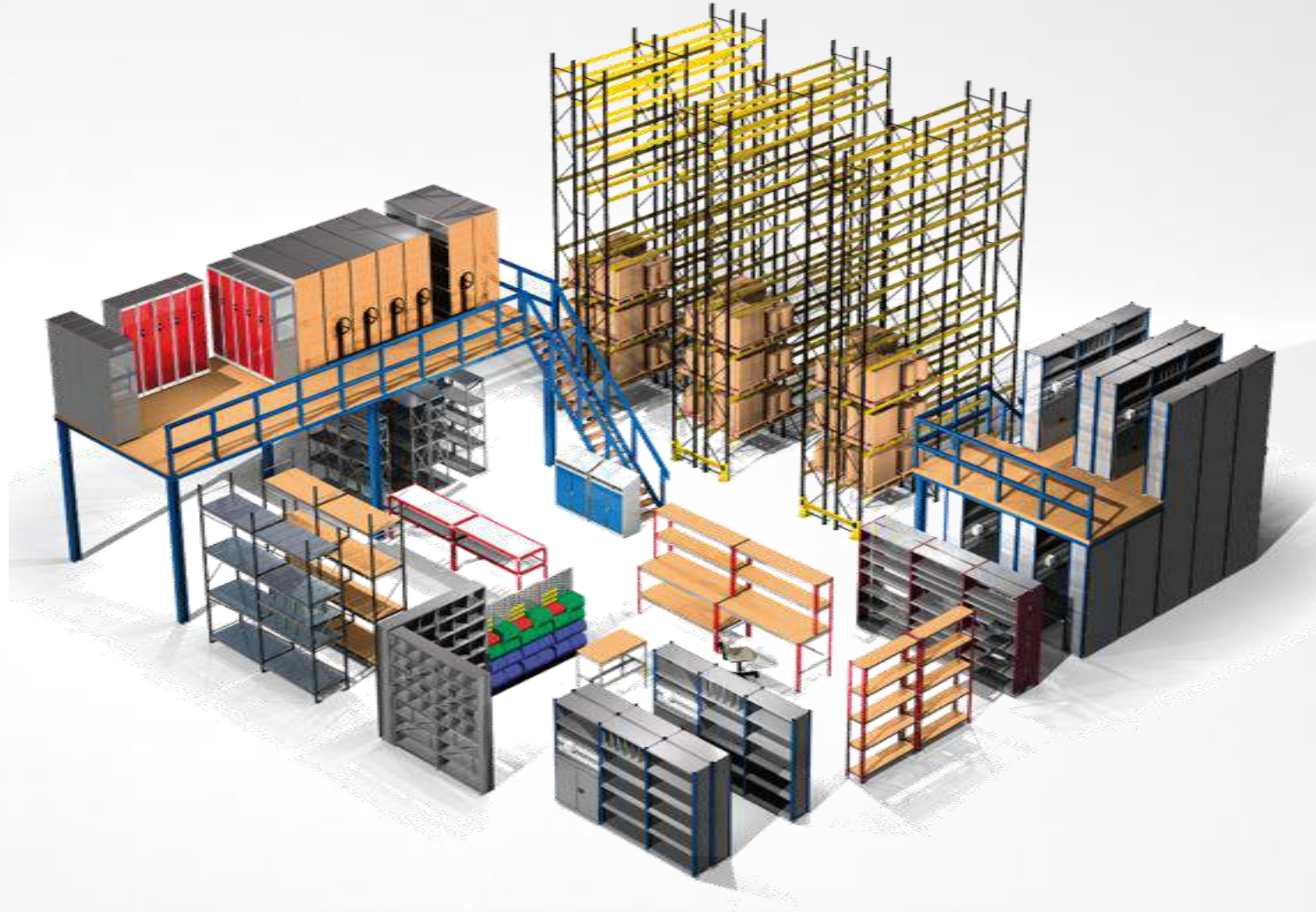
SCISSOR LIFT



Drum Lifter Specs



- OUR STORAGE SOLUTIONS





- OUR STORAGE SOLUTIONS



### LONGSPAN SHELVING

Longspan Shelving is a light-duty system ideal for general purpose storage of items such as boxes, cartons, totes, archive files and much more.

Long span is a durable, versatile and economical shelving system. It is versatile in nature means it can be incorporated into a broad spectrum of light-duty storage applications, from simple hand-loaded systems through to sophisticated order-picking systems. Very commonly used for archives to automotives, factories, warehouses, retail, wholesale and commercial. Also perfect for organizing the garage.

It is strong and durable so suits heavier or awkwardly shaped items, but also easy to assemble or reconfigure it yourself. A little extra shelf depth makes Longspan quite flexible, while the absence of a wall means you can pick from both sides.

- OUR STORAGE SOLUTIONS



### SELECTIVE PALLET RACKING

Selective pallet racking is very cost-effective, providing high capacity storage and easy access to all pallets with maximum storage flexibility and versatility.

This system is ideal where flexibility, access, and speed of operation are the main objectives.

Single or double-sided runs of selective pallet racking are separated by aisles that can be sized to suit the customer's forklift trucks. The aisle space ranges from a minimum of 2.5 meters for reach trucks and 3.5 to 4.0 meters wide for standard counter balance trucks.

By storing pallets single-deep, operators are able to get to any pallet at any time, without needing to shuffle stock around.

Selective racking is also the ideal solution if space is limited and you only have a few pallets that you need to get off the floor. Can be easily adjusted /relocated at any time.

- OUR STORAGE SOLUTIONS



### Double Deep Pallet Racking

Double Deep Pallet Racking is a storage density solution when compared to conventional aisle and considered as the best compromise between a selective and high-density pallet racking system, allowing for rapid dispatch of large, single-SKU orders.

This system increases productive use of floor space over a wide aisle system, offering the same sort of utilization as narrow aisle.

Double Deep Pallet Racking is used in conjunction with special forklifts, specially designed to reach the second pallet location.

Double deep pallet racking offers low initial cost, high productivity, and good selectivity.

Double Deep Pallet Racking can be easily adjusted or relocated at any time, or even added to if you have space.



- OUR STORAGE SOLUTIONS



### NARROW AISLE

Making better use of space, while maintaining selectivity

Narrow Aisle Pallet Racking is conventional selective pallet racking configured with narrower aisles that can be used with a specially designed turret truck. Operating cabins may be elevating or static. While these trucks are often more expensive than standard forklifts, using narrow aisles can give you major savings on building costs by allowing you to store more in less space.

This solution provides the best combination of space usage and direct access to every pallet.

Narrow aisle pallet racking can free up to 45% of the floor space given over aisles in a wide aisle scheme.

Narrow aisle forklift trucks must be used within the system, but the net result is a dramatic increase in space utilization. These trucks are guided by floor-mounted rails or electronic wire guidance fitted in the floor.

- OUR STORAGE SOLUTIONS



### DRIVE-IN PALLET RACKING

Drive-in Pallet Racking is the lowest cost and most popular form of high-density pallet racking. Pallets are stored with fewer aisles. Forklifts drive into the racking to load or retrieve pallets, which are stored on cantilevered rails running throughout the system. The first pallet in is the last one out (FILO) unless a drive-through system is used, whereby pallets can be loaded or retrieved from either side. Unique self-centering rails position pallets quickly and safely, eliminating time-consuming realignment. Picking and replenishing is facilitated by conventional forklift trucks. Heavy-duty bracing connects symmetrically to the racking upright, increasing strength and load-carrying capacity, while reducing the amount of bracing required. Backstops are positioned at the end of the pallet runners to prevent pallets from being pushed too far into the racking, eliminating potential damage to spine bracing and further increasing safety.



- OUR STORAGE SOLUTIONS



### CANTILEVER RACKING

Cantilever racking is ideal for storing long, irregular and mixed loads such as beams, steel sections, extrusions, wood, pipes, tubes, carpet rolls, profiles etc. It is a highly simple and rugged system, strong, cost effective and safe solution which maximizes the usage of floor space and utilizes vertical space.

Each rack is designed and manufactured to maximize your storage space while giving you easy access to your products based upon the type, height and weight of the stored product. Column spacing, column capacity and arm capacity are critical for a safe and proper system. Our storage experts can design and build the cantilever racking for maximum storage and safety. These types of cantilever (light or heavy duty) racking systems are suitable for hand stacking or forklift load applications, and are available in a single or a double sided structure.

- OUR STORAGE SOLUTIONS



### Mezzanine system

This storage system builds a mezzanine area over a rack structure, which is intended for sort able storage. With load requirements of up to 1000 kg/m<sup>2</sup> our engineers use standard racking components to deliver your system in a cost effective and time efficient way.

With this type of raised storage area, the aisles are built between the racking rows or complete platforms are built onto the existing racking units. This enables the usage of shelving for typical manual-picking or storing the pallets under the mezzanine floor.

As an added advantage this type of mezzanine system is completely removable, allowing great flexibility for modifications, extension and / or relocation, if required.

- OUR STORAGE SOLUTIONS



### MOBILE PALLET RACKING

In a mobile racking system, instead of being secured to the warehouse floor, the racks are mounted to electrically-powered mobile bases – bogies – which run on special hot-rolled cast steel rails, securely attached to the concrete slab.

Each bogie contains four direct-drive, low torque, high inertia motors to provide even and uniform drive. All bogies feature structural protection devices to absorb any accidental impacts from forklifts. In addition, structural side members protect the base and power cables, and help keep the wheel units aligned correctly and moving in the same direction.



- OUR STORAGE SOLUTIONS



### PUSH-BACK PALLET RACKING

An accumulative storage system that allows up to four pallets deep to be stored per level. All of the pallets of each level, except the top one, are placed on a set of trolleys that are pushed along rolling rails.

Push-back is ideal for storing medium-turnover products, with two or more pallets per SKU (using the Last In First Out (or LIFO) system).

- OUR STORAGE SOLUTIONS



PALLET FLOW RACK

Flow Storage consists of two elements: a static rack structure and dynamic flow rails. The flow rails are a track/roller system set at a decline along the length of the rack. Flow rails allow loads to move by gravity from the loading end to the unloading end. Each flow lane includes self-energized speed controllers (brakes) to gently control the speed of movement within the flow lanes. As a load is removed, the loads behind it move forward to the unloading position. The flow system depth, height, and width are limited only by the size of your facility and the capabilities of your material handling equipment. Flow Storage solutions are used in situations where storage density and inventory rotation are priorities



- OUR STORAGE SOLUTIONS



PALLET SHUTTLE

This is a high-density pallet storage system making it easier to load and unload goods thanks to an electric carriage called a Pallet Shuttle. The system uses shuttles to move independently within the rack itself, meaning forklifts are not needed to reach inside the storage lanes. The operator performs all the procedures for storing and extracting pallets simply by using a remote control.

- OUR STORAGE SOLUTIONS



Clasimat vertical lift

Vertical automated storage system which enables optimising workload and takes full advantage of all available space. It is made up of a carrying structure in which the entrance and the exit of goods are automated thanks to a shuttle or an extracting and elevating mechanism. This machine applies the principle "product to operator", which allows orders fulfilment optimization.

It operates in a very simple way; the operator chooses the desired product on the screen and the shuttle automatically moves to the level where it is located. It selects the corresponding tray and carries it to the picking site or the table for outgoing goods.



## Our Clients

- ABB Group
- Bahgat Group
- Alexandria Library
- Alsalhia Metallurgical Industries
- Arab Organization for Industrialization
- Aramex
- Arma Food Industries
- Bavaria Egypt S.A.E
- Belayim Petroleum
- Kafr El Zayat Pesticides and Chemicals
- Suez Oil Processing Company
- Misr Elhegaz Group
- National Paper Company
- Oriental Weavers
- Otsuka Pharmaceutical
- PETROJET
- MINAPHARM Pharmaceutical
- Uni Charm 10th of Ramadan
- Metro Supermarket
- AUC
- BMW Egypt
- Central Bank of Egypt
- Chipsy Egypt
- Chemical Industries Development (CID)
- Delta for Chemical Industries
- Eastern Company
- Eipico Pharmaceutical
- Egypt Air
- GASCO
- Kiriazi Group
- Ministry of Irrigation and Water Resources
- Mobinil
- Olympic Group
- Suez For Cement Industry
- Ministry of Health
- Toyota Egypt
- Royal cosmetics
- Sidi Gaber station development
- Amoun Pharmaceutical
- Al HAE (LG)
- Ceramica Cleopatra
- Eva Pharma
- Four Seasons Hotel
- FRESH Electric for Home Appliances
- El Helal and Golden star Group
- Edita Food Industries
- Egypt Police Press
- Egyptian National Railways
- General Motors Egypt
- Mercedes Benz - Egypt
- United Company for Foundries
- PetroSport Club
- Schneider Electric
- Suez Canal Authority
- Ministry of Defense
- Tecnogas
- Alexandria Library
- City Stars
- 4 branches of Bank Audi
- Heesung (LG)
- Elsewedy
- Ideal Standard
- GlaxoSmithKline
- Kader for Advanced Industries
- Heliopolis for Chemical Industries
- Green Land Company
- Heliopolis Sporting Club
- Helwan Company for machinery and equipment
- Henkel Egypt
- Manufacturing Commercial Vehicles (MCV)
- Ministry of Military Production
- PHILIPS Egypt
- Savola Egypt
- SEMAF Factory
- The Arab Contractors
- National Postal Authority
- 6 October University
- Raya holding
- Procter & Gamble
- VSE



مجموعة بدوي للصناعة والتجارة - بيكو  
Badawy Industry & Trade Group - BEECO

THANK YOU FOR TAKING THE TIME TO READ OUR COMPANY PROFILE. IF THERE  
ARE ANY QUESTIONS OR COMMENTS, PLEASE FEEL FREE TO CONTACT US.

10th of Ramadan City – Industrial Zone A1' – Plot 33/1

Tel.: 015-410860 / 411310 / 410235

Fax: 015-410234

P. O. Box: 1741

<http://www.badawybeeco.com>

[sales@badawybeeco.com](mailto:sales@badawybeeco.com)